



BC5401 Series Explosion proof Tube Light

LED



ATEX Ex Marking:

Ex II 2 GD

Ex de II B T6 Gb

Ex tb IIIC T80°C Db

Standard: GB3836.1, GB3836.2

EN60079-0:2009, EN60079-1:2007,

EN60079-31:2009

IEC60079-0:2007, IEC60079-1:2007,

IEC60079-31:2008

Application

- It can be widely used in petrochemical plants, oil platforms, oil pump housing, transit stations and other flammable and explosive places as fixed lighting.
- Gas explosive environment: Group IIA、IIB、IIC.
- Zone1, Zone2; Zone21, Zone22.

Characteristics

- It is made using a special aluminum housing, anti-corrosion performance than 304 stainless steel, suitable for long-term highly corrosive environment of offshore platforms, chlor-alkali, hydrogen sulfide, etc.
- The anti corrosion, abrasion proof, power coated cover which is dust proof, water proof, make the lamp an excellent option for all kinds of high environment.
- All 304 stainless steel bracket screw (customizable 316), can effectively guarantee the long-term strength and strong corrosion problems of lamps.
- Terminals are provided at both ends, can be directly wired in parallel, eliminating the junction box and installation costs.
- A variety of installation as optional: ceiling, oil derrick, the side walls, curved rods, boom, etc.

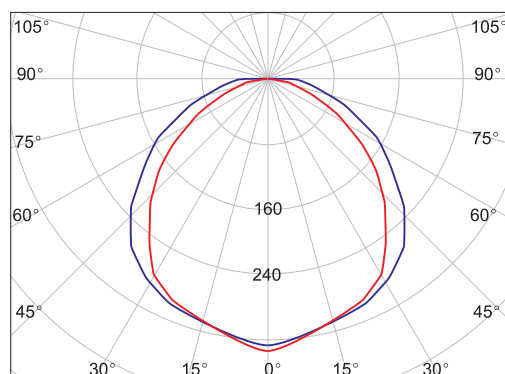
Technical Specification

Item	Technical specification		Remark
Light source	LED	Fluorescent lamp	T8 LED lamp, T5 fluorescent lamp
Rated power	2×20W、2×10W	2×28	
Input voltage range	100-240VAC	220~240VAC, 110VAC	
Input frequency	50/60Hz	50/60Hz	
The entire lighting efficiency	70lm/W	60lm/W	
Light source efficiency	90lm/W	70lm/W	
CRI (Ra)	80	70	
Service life (h)	>50000	>20000	The light fades less than 30% of the initial value
Color Temperature	5300K-6000K	4000K	2700-6000K is available as order for LED Tube
Drop cable	Φ10mm-Φ14mm	Φ10mm-Φ14mm	G3/4", NPT3/4", M25 is available as order
Terminals	Multi-strand wire: ≤2.5mm ²		
	Single-strand wire : ≤4mm ²		
Dimensions (mm)	1390mm	1390mm	2×20W
	780mm		2×10W
Net weight (kg)	11Kg	11Kg	2×20W
	7.5Kg		2×10W

BC5401 Series Explosion proof Tube Light



Light distribution curve

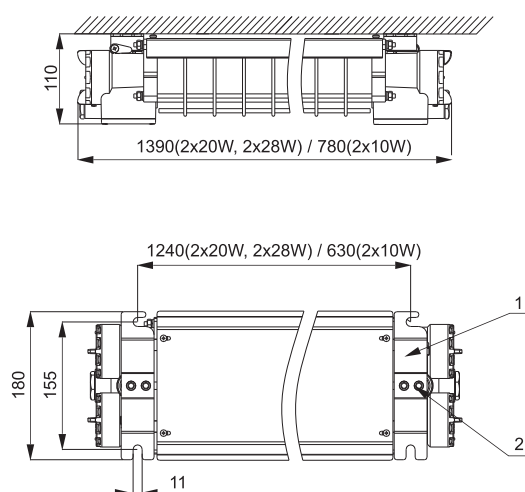


2x20W LED Tube

— 0°
— 90°

Drawing of dimension (Dimensions in mm)

Ceiling-mounted



Lamps Ordering Information

Order No.	Installation	Lamp power	Light source
BC5401L10A	Ceiling	2 × 10W	LED
BC5401L20A		2 × 20W	LED
BC5401L28A		2 × 28W	Fluorescent Lamp

Fitting Ordering Information (Standard)

Order No.	No.	Specifications Model	Quantity
P08	1	Ceiling Bracket	2
	2	M6 Bolt	4

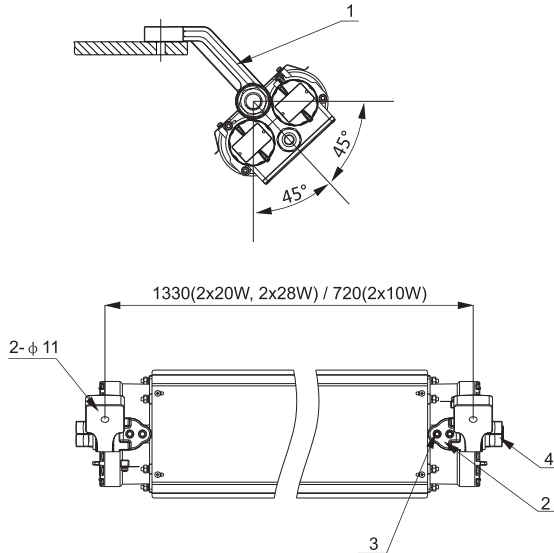




BC5401 Series Explosion proof Tube Light

Drawing of dimension (Dimensions in mm)

Derrick installation



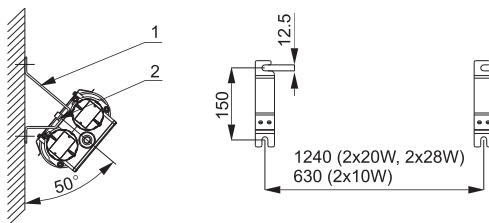
Lamps Ordering Information

Order No.	Installation	Lamp power	Light source
BC5401L10A	Derrick type	2 × 10W	LED
BC5401L20A		2 × 20W	LED
BC5401L28A		2 × 28W	Fluorescent Lamp

Fitting Ordering Information (Standard)

Order No.	No.	Specifications Model	Quantity
P09	1	Derrick bracket	2
	2	Base	2
	3	M6 Bolt	4
	4	M24 Bolt	2

Sidewall installation



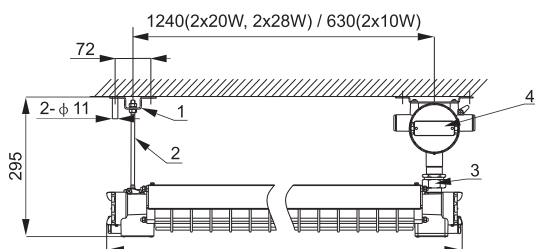
Lamps Ordering Information

Order No.	Installation	Lamp power	Light source
BC5401L10A	Sidewall type	2 × 10W	LED
BC5401L20A		2 × 20W	LED
BC5401L28A		2 × 28W	Fluorescent Lamp

Fitting Ordering Information (Standard)

Order No.	No.	Specifications Model	Quantity
P10	1	Sidewall bracket	2
	2	M6 Bolt	4

Pole mounting



Lamps Ordering Information

Order No.	Installation	Lamp power	Light source
BC5401L10A	Pole mounting	2 × 10W	LED
BC5401L20A		2 × 20W	LED
BC5401L28A		2 × 28W	Fluorescent Lamp

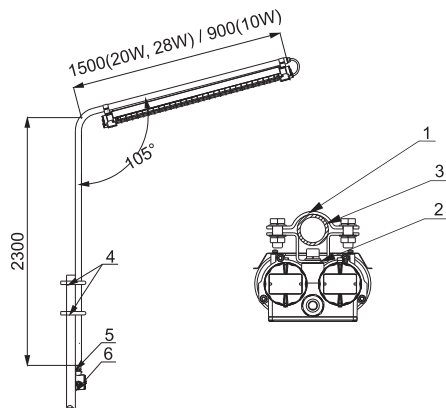
Fitting Ordering Information (Standard)

Order No.	No.	Specifications Model	Quantity
P13	1	Pole mounting bracket	1
	2	19cm Screw(M8)	1
	3	Adaptere (external-external)	1
	4	Explosion proof junction box	1

BC5401 Series Explosion proof Tube Light



Rod mounting



Lamps Ordering Information

Order No.	Installation	Lamp power	Light source
BC5401L10A	Rod	2 × 10W	LED
BC5401L20A		2 × 20W	LED
BC5401L28A		2 × 28W	Fluorescent Lamp

Fitting Ordering Information (Standard)

Order No.	No.	Specifications Model	Quantity
P11	1	Upper hoop	2
	2	Under hoop	2
P12	3	DN32 Poles	1
	4	U tube clip	2
P02	5	Adaptore (external-external)	1
	6	Explosion proof junction box	1

